



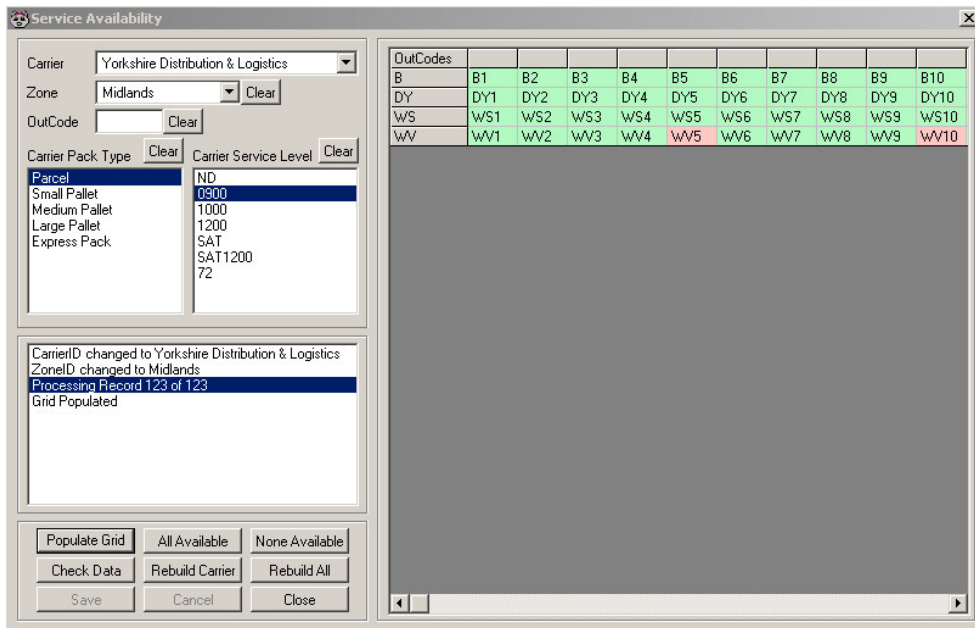
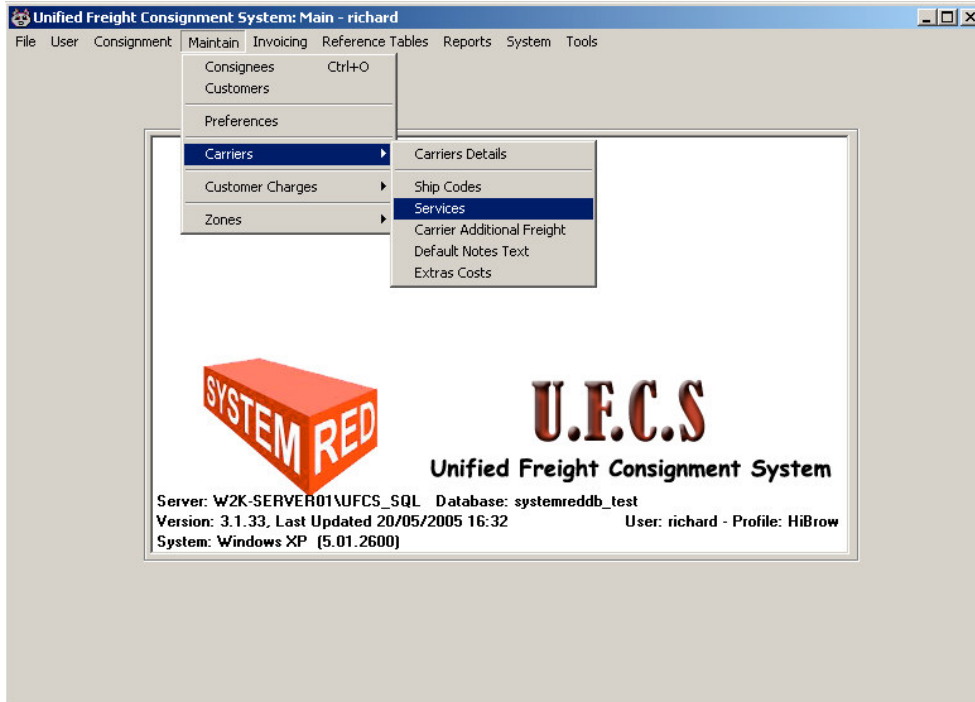
Remove the shackles; run your business your way.....

System Red Limited
Tel: +44 (0) 1326 563300
Fax: +44 (0) 8700 513331
Email: enquiries@systemred.co.uk
Web: www.systemred.co.uk

Service Availability & Preferred Carrier

Service Availability

System Red maintain ALL aspects of service availability to post code offered by the carriers (i.e. 10's 12's etc).



The example on the left displays that for the carrier "Yorkshire Distribution & Logistics", zone "Midlands" package type "Parcel" and service level "0900" all post codes other than "WV5" and "WV10" are available.

This demonstrates the detail to which you can decide the various combinations that can be chosen, and the ease by which they can be chosen. Choices can be made individually or in groups, i.e. you can choose one or more package types, service levels etc then make them all available then.

As stated previously we at System Red maintain all aspects of service availability, but do remember that within U.F.C.S. for consignments that you delivery yourself or at least do not place with a national network. You yourself are recognised as a carrier and have full control over the services that you offer to your customers.

Preferences (Setting your preferred carrier)

The word "Preferences" in U.F.C.S. means which carrier you prefer to send your goods via based on package type, post code and service level. The important word to remember is "Preferred", you can set your preferences any way you want to, base it on price, service, location, anything it is your decision, and you can change it anytime you want to. You can even set different preferences at different sites to suit your individual customers requirements.

OutCodes	B1	B2	B3	B4	B5	B6	B7	B8	B9	B10	B11
B											
BA											
BB											
BD											
BH											
BL											
BN											
BR											
BS											
BT											

The example on the left demonstrates the flexibility of U.F.C.S. Here we have asked the system to display all post codes beginning with the letter "B" with a package type of "Small Pallet" and a service level of "Nextday". Each carrier is allocated a colour code for easy reference. Therefore post codes B,BA,BD and BL preferred carrier is shown in red, BA,BH,BN,BR and BS preferred carrier is shown in blue and BT in pink.

As with service availability you have maximum flexibility in managing the information, you can select individual, some or all of the choices, populate the grid, set them all as available then deselect the odd ones not required.

The most important feature of preferences is this, it is "ONLY" a preference U.F.C.S. will show you every alternative therefore allowing you to make an informed decision.

Disclaimer

The information shown is not meant to be representative of any carrier or any carriers routing or rate structure. The information is provided solely for demonstration purposes and should be viewed as such.